

Laser Marking Station e.L-BOX



The mark of quality



SIMPLE

ROBUST

SECURE

e.LBOX, compact, stand-alone marking station

The precision solution that leaves its mark!

The **e.L-BOX** is a station designed for fast, accurate industrial marking. Equipped with a laser source, it adapts to all materials and produces fast, precise and high-contrast marking of your texts, logos and 1D/2D codes. This makes the e.L-BOX an ideal, robust solution for traceability and identification in industrial environments.

0A38 1340 83



Lightweight,
well-balanced
manual door

Motorized Z-axis
for fast, precise
positioning

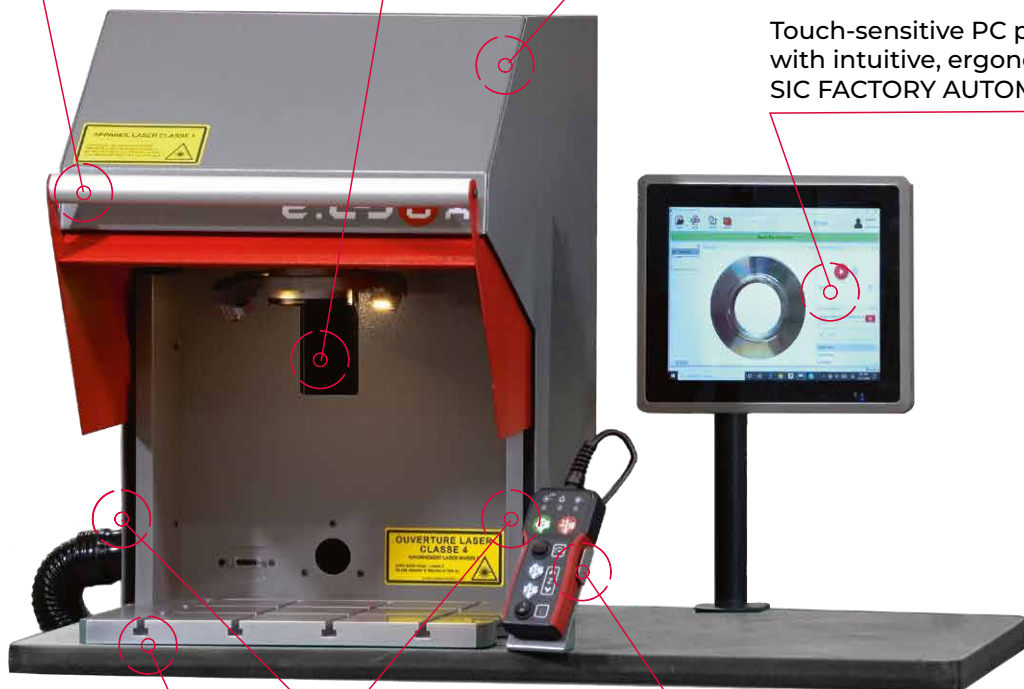
Versatile fiber laser,
long component
life (>100,000 h)

Touch-sensitive PC panel
with intuitive, ergonomic
SIC FACTORY AUTOMATION

Grooved table, simple tool
installation

3-sided opening
for maximum accessibility

Ergonomic magnetic
control panel



Robust and safe

- Class 1 security station compliant with ISO 60825-1. Measured and certified according to a strict validation protocol.
- Simple, robust design, all-steel housing, suitable for harsh industrial environments.
- Reliable, long-life fiber laser technology. Maintenance-free, no wearing parts.



1



2



3



4



5



6



7



8

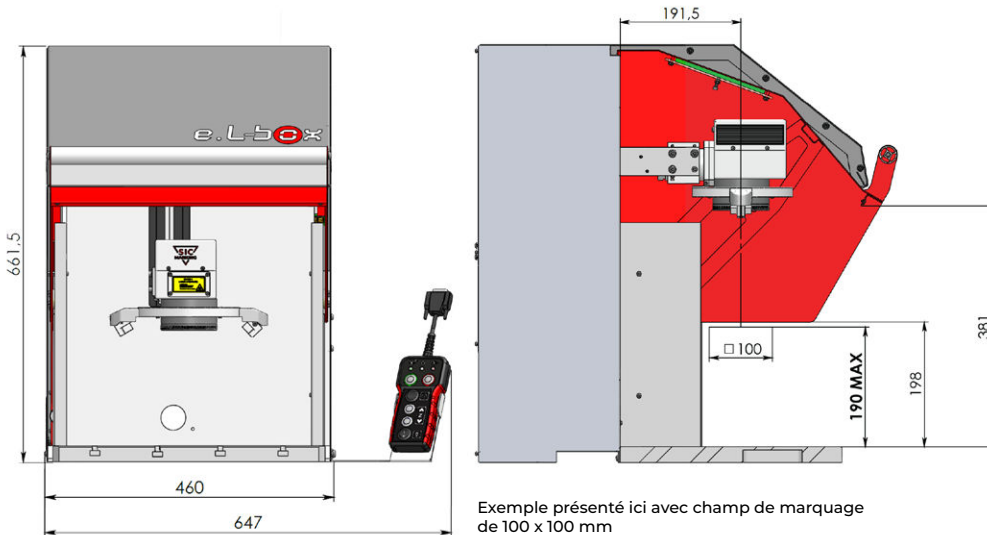
Fiber lasers, a versatile technology for marking a wide variety of materials:

- | | |
|-----------------------|---|
| 1 Steel. | 5 Painted materials. |
| 2 Stainless steel. | 6 Alloys. |
| 3 Tungsten carbide. | 7 Brass. |
| 4 Anodized materials. | 8 Polymers.
(validation test required) |

Technical specifications and accessories.

Application examples

Technical specifications:



Exemple présenté ici avec champ de marquage de 100 x 100 mm

Power supply	100-240V AC
technology	Fiber laser 1064 nm
Power	20W / 30W
Marking fields	100 x 100 mm / 170 x 170 mm
Maximum part size	385 x 330 x 370 mm
Laser safety (EN 60825-1)	Classe 1
Machine weight	70 kg

Available accessories:

Rotary axis



Panel PC with touch screen



Barcode reader



Workbench on wheels

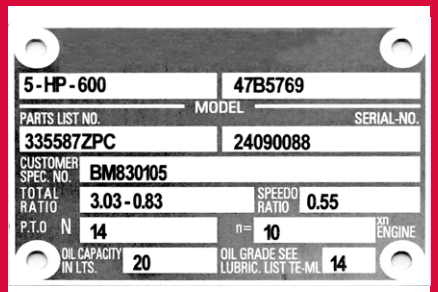


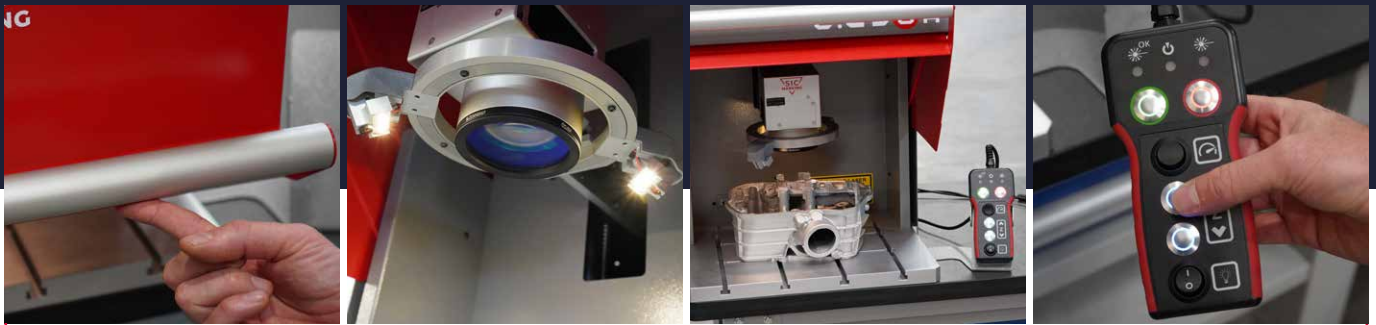
W 1000 x D 600 x H 750 mm
4 x 10 cm castors

SIC FACTORY AUTOMATION



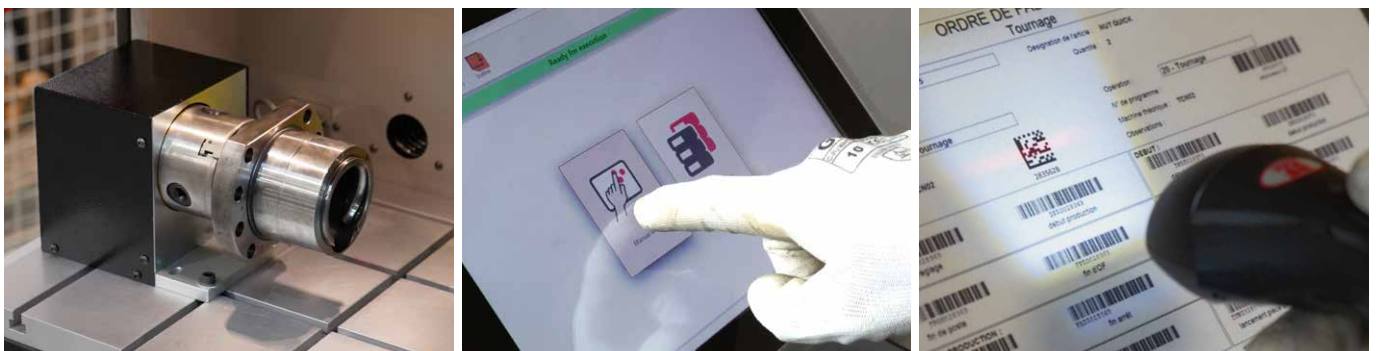
Smoke extractor





All-in-one, ergonomic laser solution

- All-in-one, ready-to-use, easy-to-position solution, suitable for seated or standing work.
- Balanced, lightweight door for effortless opening.
- Laser station with motorized axis, laser pointers for fast and precise adjustment of focal distance.
- Large working volume 385 x 330 x 370 mm. Maximum focal length: 190 mm.
- Opening on 3 sides for improved accessibility to marking area.
- Magnetic control unit for free positioning and improved workstation ergonomics.



Flexible and easy to use

- Grooved table supports heavy loads. Easy installation of tools and accessories.
- Rotary axis for marking cylindrical parts (see accessories and options).
- SIC FACTORY AUTOMATION SOFTWARE on touchscreen HMI. Simple and easy to use.
- Data entry by barcode scan (error-free operation by the operator).



The 8 key SIC Marking services



Personalized advice for the best choice of technology

Laser, micro-percussion or scribing? Our experts will help you identify the marking technology best suited for your requirements, thanks to our wide range of solutions.



Customized solutions tailored to your needs

We develop customized products that are perfectly adapted to your industrial processes and requirements.



Feasibility studies and technical tests

We carry out rigorous feasibility studies and tests to validate each stage of your project. Engineering tests are also available.



Complete training for your teams

Our specialists train your teams in the use of your equipment to ensure autonomous and effective control.



Assistance during commissioning

Our local teams are on hand to support you during the commissioning of your machine, facilitating smooth and rapid integration into your day-to-day operations.



Technical support and after-sales service

Responsive after-sales service and dedicated technical support members are at your side for assistance for the supply of spare parts and consumables.



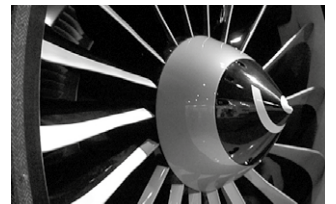
Retrofit solutions for sustainable performance

We offer customized retrofit solutions to extend the life of your machines: backward compatibility with updated components, complete modernization or equipment takeover.



Global support with local expertise

With 10 subsidiaries and a worldwide network of distributors, we offer global resources combined with local support to take charge of your projects from design to installation.



SIC MARKING Limited
Wedgnoek Industrial Estate,
Warwick, United Kingdom
+44 19 26 83 03 72

salesuk@sic-marking.com
<https://www.sic-marking.co.uk>

