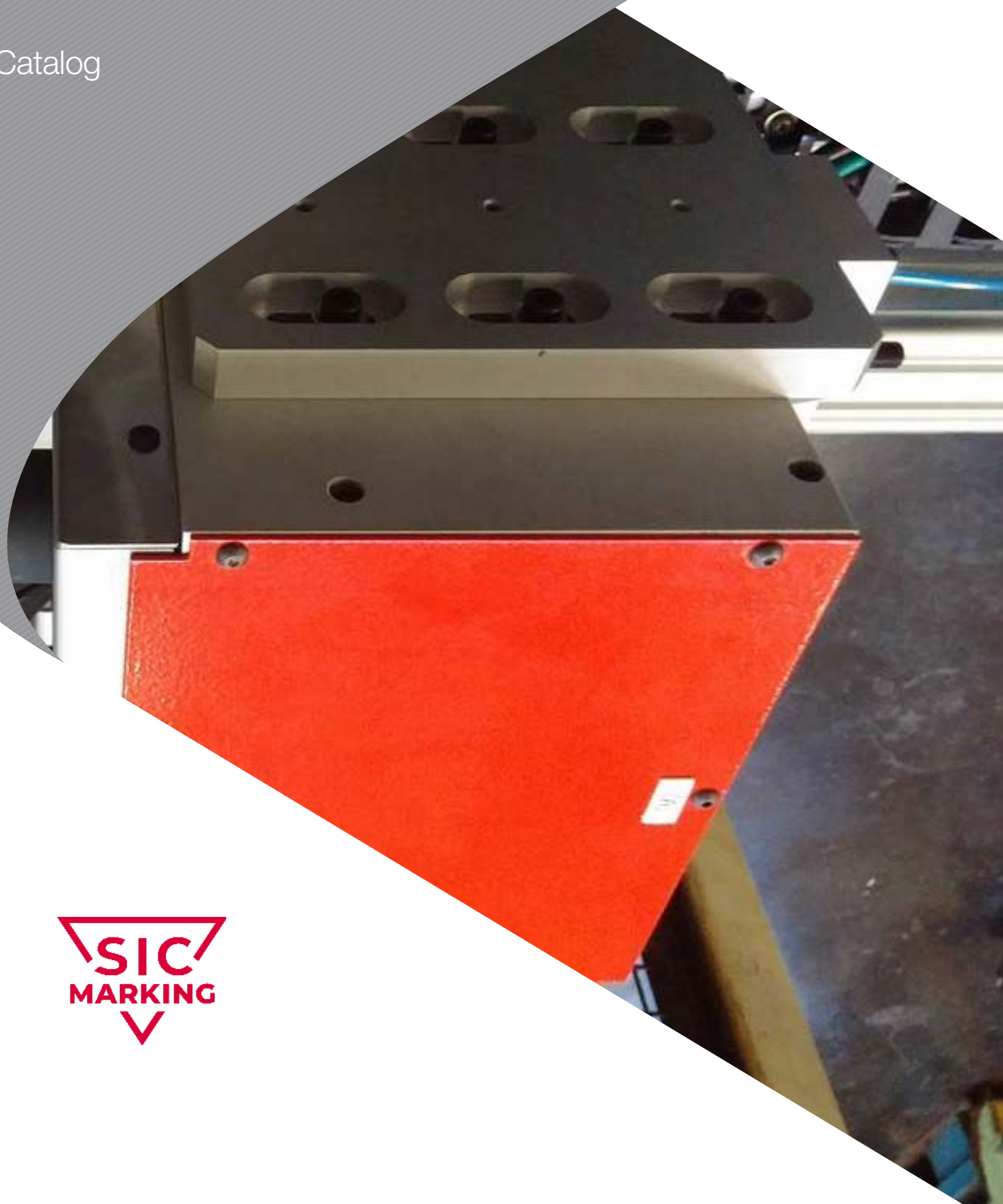




DOT PEEN

INTEGRATED RANGE

Catalog





**SUPPORTING YOU ALL
OVER THE WORLD**
Subsidiaries in Italy,
Germany, Great Britain,
Canada, the United
States, Mexico, China,
South Korea, and a
network of more than 40
distributors...

SIC MARKING, A GLOBAL SPECIALIST IN MARKING AND TRACEABILITY SOLUTIONS.

SIC Marking is an international group developing permanent marking solutions and automatic reading systems (datamatrix) for the traceability of industrial components. SIC Marking offers a complete range of dot peen, scribing and laser marking machines.

With 30 years of experience, SIC Marking develops traceability applications for a wide range of materials such as steel, alloys, stainless steel, titanium, aluminum, and plastics. Today we work with professionals in various industries such as: automotive, aerospace, metallurgy, mechanical engineering, plastics processing, railway, medical, construction, defense...

With an experienced, responsive and involved team, SIC Marking offers a complete range of standard products, and custom machines to meet all your needs.



SIC Marking is certified ISO 9001: 2015





DOT PEEN TECHNOLOGY : FAST, EFFICIENT MARKING ON ANY MATERIAL!

Dot peen marking works by electromechanically striking a carbide or diamond stylus assembly against the surface of a part to be marked.

The result is a succession of dots to create digits, text, logos, and 2D data matrix codes. Each dot is the result of a pulsed current that runs through a solenoid, punches a magnet toward the surface, and subsequently returns the stylus to its starting position, awaiting the next pulse. Because each pulse occurs in only a fraction of a second, an entire 2D data matrix code, for example, can be completed in seconds (depending on the size). Frequency can be adjusted by controlling the speed of the X and Y axes movements.

What makes SIC Marking's dot peen technology so unique is the constant measurement of the electrical current between each pulse. This allows for constant, precise control of the impact consistency.



EFFECTIVE AND COST-EFFICIENT INTEGRATION



SUITABLE FOR
MARKING
2D CODES

Our integrated marking systems are designed for seamless integration into automated production lines, and are engineered for intense industrial use. Their fast and easy integration and high performance record have earned a reputation as a reliable, precise industrial marking solution. They meet the needs of custom requirements, and incorporate fixed-mounted camera systems for automated reading.

+ ROBUST AND RELIABLE

- Fully enclosed system
- Protective bellows
- Designed for intense use in industrial environments

+ SIMPLE AND USER-FRIENDLY

- Fast and easy integration
- Compact (i53 / e-smart)
- Removable robotic cable
- Simple programming

+ WIDE RANGE OF OPTIONS

+ HIGH PERFORMANCE

- 100% electromagnetic technology (no air supply required)
- Precise and accurate guides
- Long stylus for part distance-to-tolerance variations
- High speed
- Powerful integrated software
- Wide choice of marking windows

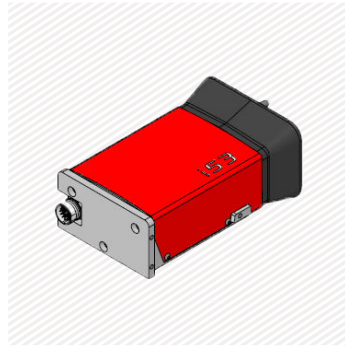
+ LOW COST OF OWNERSHIP

- No consumables
- Reduced maintenance

OPTIONS



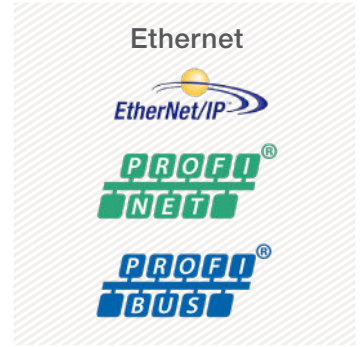
Z axis 50 to 250 mm -
2 x 9.8 in



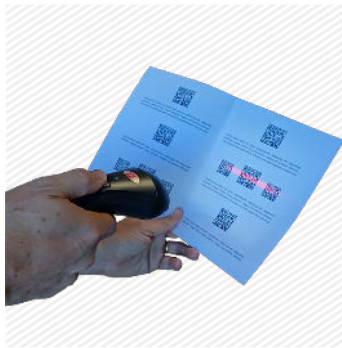
Adapter plate



DIN rail kit for e10R
controller



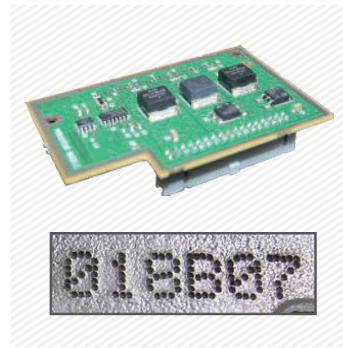
Communication cards for
e10 controller



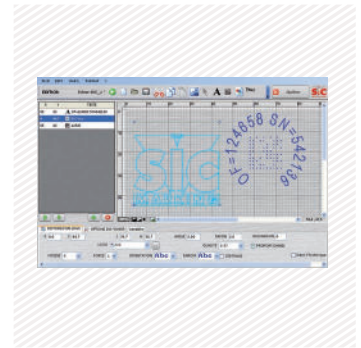
1D / 2D reader
(wireless)



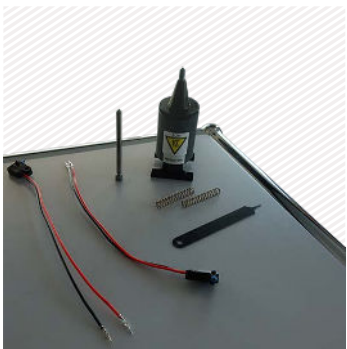
Barcode reader
(wireless)



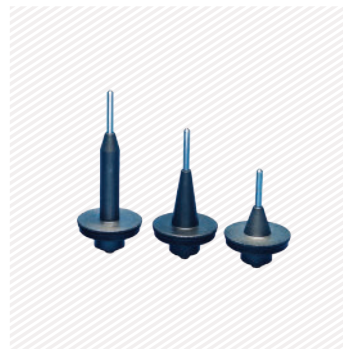
Booster card for deep
marking



PC software



Maintenance kit



Wide range of stylus



Start & Stop button box
with 4 file selector



Start & Stop button box

	e10 i53	e10 i83	e10 i143	e-smart
Z axis 50 to 250 mm - 2 x 9.8 in	●	●	●	
Adapter plate	●			
DIN rail kit for e10R controller	●	●	●	
Communication cards	●	●	●	
Datamatrix reader	●	●	●	●
Wireless barcode reader	●	●	●	●
Booster card for deep marking				●
PC software	●	●	●	●
Maintenance kit	●	●	●	●
Wide range of stylus	●	●	●	●
Start & Stop button box with 4 file selector				●
Start & Stop button box	included	included	included	●

Please consult us if a specific configuration is not published in the table attached.

SIC Marking designs customized and turnkey solutions for all industrial sectors. Our design offices produce machines in compliance with your specifications and your industrial standards.

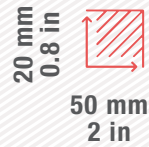
E10 INTEGRATED RANGE

 STRIKING POWER

 DATA BASE MANAGEMENT

e10 i53

Marking window:



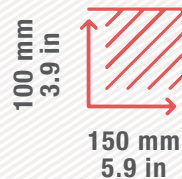
ULTRA COMPACT

- Suitable for marking datamatrix codes
- Easy integration: 4 mounting areas
- Marking speed and quality
- Fast marking on all types of surfaces



e10 i143

Marking window:



LARGE FORMAT MARKING

- Suitable for marking datamatrix codes
- Mechanics precision
- Simple programming
- Compliance with Aeronautics standards

+ Available with autosensing (e10 i143a)



e10 controller

- Color screen
- USB Port: to easily upload / download your marking files
- Fully programmable
- Standalone (no PC needed)
- Membrane protected industrial Keyboard
- IP40 waterproof box (no opening or fan)



+ Color screen

+ USB Port

+ Multiple connectivities



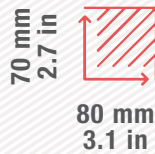
+ PC software and utilities



DIN rail kit for e10R controller

e10 i83

Marking window:

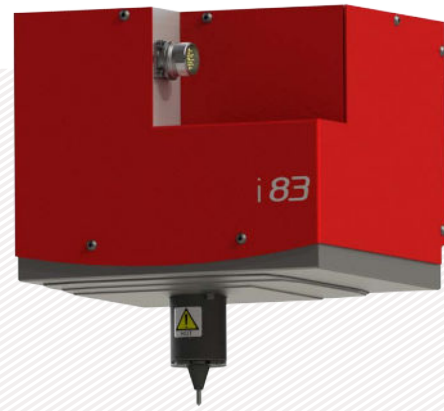


FAST & ACCURATE

- Mechanics precision
- Integrated cable for better protection
- Compliance with Aeronautics standards

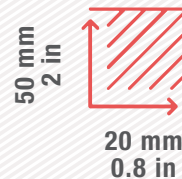
+ Available with autosensing (e10 i183a)

+ Available with integrated vision system (e10 i83v)



e10 i-speed

Marking window:



VERY FAST AND COMPACT

- Marking speed of 6 char/sec
- Continuous vibrating technology allows extremely fast permanent marking
- Significant productivity gains
- Very compact for easy integration



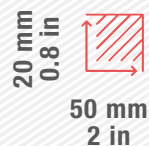
E1 INTEGRATED RANGE

👍 COMPACT SYSTEM

👍 GOOD VALUE

e-smart

Marking window:



SIMPLE AND EASY TO USE

- Ease of integration
- Stand Alone machine that integrates its controller
- Space saving: no controller to install in electrical cabinets
- All in one

The first machine that integrates its controller!

