

INTEGRATED SCRIBING MARKING MACHINE

e10 i63s



+ EXTREMELY QUIET MARKING

- Air supply
- Ideal for light marking

+ SIMPLE AND EASY TO USE

- Ideal for integrations
- Removable robotic cable
- Quick pneumatic connection



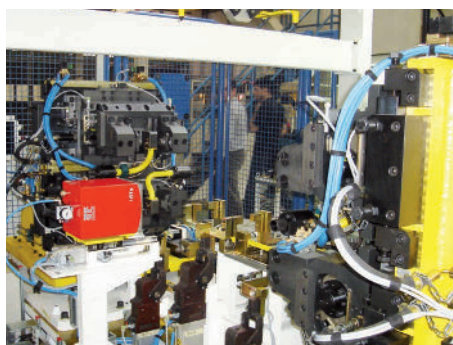
+ ROBUST AND RELIABLE

- Protected by metal bellows
- Designed for intensive use
- Compatible with previous ranges

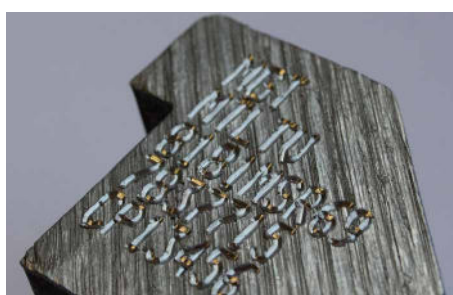
+ LOW COST OF OWNERSHIP

- No consumable
- No maintenance

APPLICATIONS

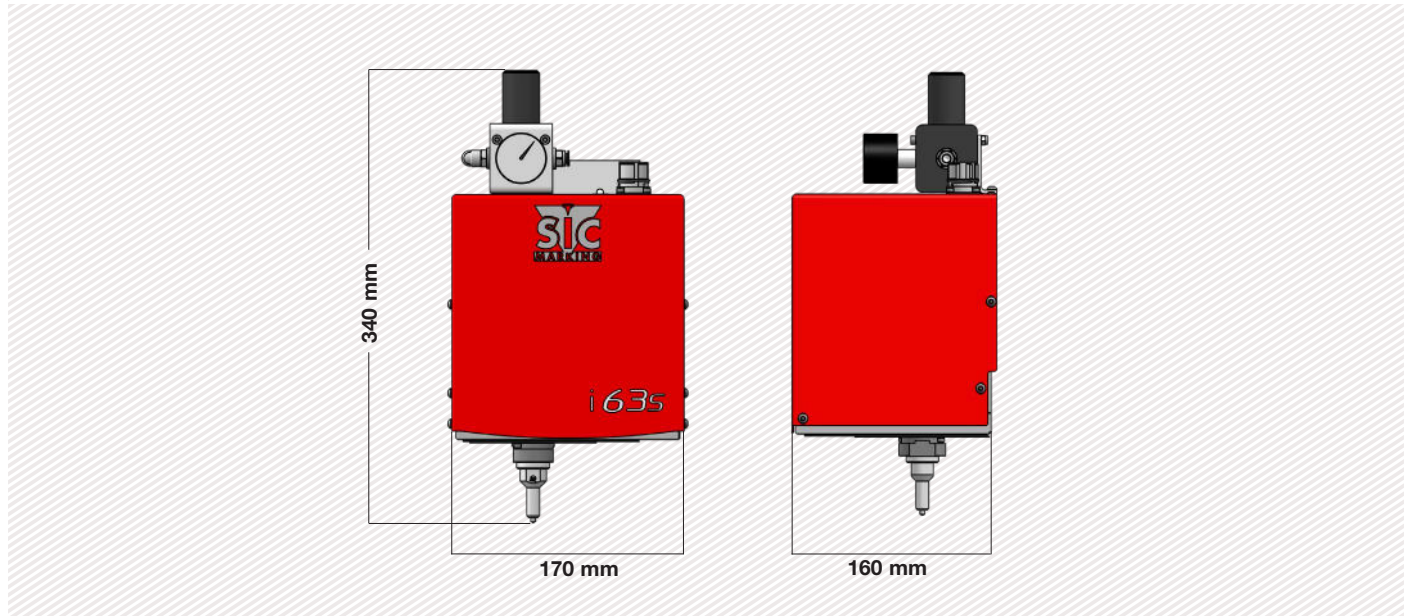


SCRIBING MARKING EXAMPLES



TECHNICAL & MECHANICAL FEATURES

e10 i63s	
Marking window	60 x 30 mm - 2.4 x 1.2 in
External dimensions	160 x 170 x 340 mm - 6.3 x 6.7 x 13.4 in
Weight	7,8 kg - 15.4 lbs
Stylus	Carbide or Diamond Tip
Machine / controller cable length	5 m - 16.4 ft (10 m - 32.8 ft and 15 m - 49.2 ft optional)
Air supply	6 bars



OPTIONS



Large capacity rotary axis



Adapter plate i61s -> i63s



Column base



DIN rail kit for e10R controller



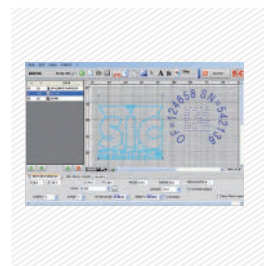
Wide range of stylus



3rd / 4th axis management card



Wireless barcode reader



PC software



Maintenance kit

Please consult us if a specific configuration is not published in the table attached.

SIC Marking designs customized and turnkey solutions for all industrial sectors. Our design offices produce machines in compliance with your specifications and your industrial standards.

E10 CONTROL UNIT

The e10 controller

- USB Port: to easily upload / download your marking files
- Fully programmable
- Standalone (no PC needed)
- Membrane protected industrial Keyboard
- IP40 waterproof box (no opening or fan)
- Communication Cards - I / O






+ Multiple connectivities

+ PC software and utilities

+ Color screen

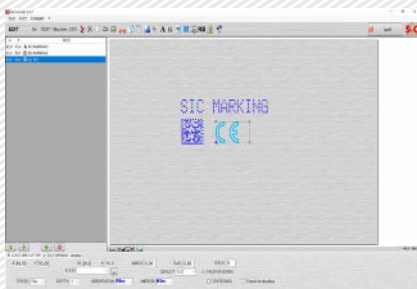
+ USB Port

Technical & electronic features

e10 Controller		Communication	
Dimensions	322 x 380 x 112 mm - 13.7 x 15 x 4.4 in 140 x 380 x 222 mm - 5.5 x 15 x 8.7 in with DIN rail kit option	Communication ports	RS232, RS422, USB, RS485 Profibus, TCP/IP, Ethernet/IP
Weight	5 kg - 11lbs	Inputs-outputs	8/8
LCD screen resolution	480 x 272 pixels	External keyboard input	USB
Keyboard	Qwerty integrated, protected by membrane	PC software	Creation of marking files, transfer controller / PC or USB key
Power	300 Watt	Optional communication cards:	
Power supply	Single phase, 85 to 260 VAC, 50 to 60 Hz	Ethernet TCP	
Controlled axes	2 (optional 3rd / 4th axis card)	PROFINET	
Operating temperature	From 5 to 40°C	PROFIBUS	

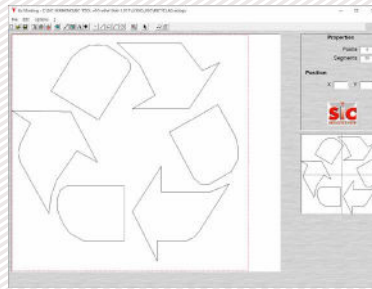
PC UTILITIES

File editor



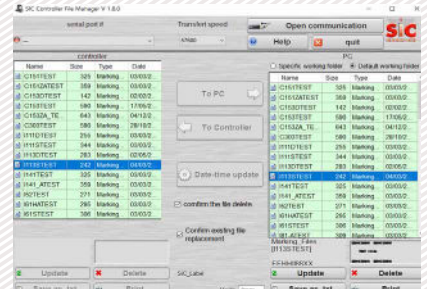
+ Creation or modification of files on PC.

Creation of logos



+ Creation of vector and matrix logos.

Creation of logos



+ Backup and file transfer utility.

E10 RANGE SOFTWARE

Software features

Text function	Incrementation, date codes
Logos	Download from a PC or USB key
Datamatrix	Up to 348 characters, 48 x 48 dots
Fonts	Arial, Comic, Comic_B, Courier, OCR, OCR_BOLD, OCRA, 4x6
Style	Angular, Radial, Inverse, and Mirror
Character Size	From 0,1 mm to 99 mm (limited following marking window)
Depth	Up to 0,3 mm (according to the material)
Resolution Between Dots	0,05 mm MAX
Password	2 security levels
History function	Exportable Excel file
Help with maintenance	Auto diagnosis
Available languages	17



Graphic view



Edit menu

I/O SETTING		
Num	Input	Output
1	STOP	Cycle
2	START	Last
3	File Sel.	Error
4	File Sel.	Pause
5	File Sel.	Ready
6	None	NoPart
7	None	Part
8	None	Wear

CONTROLLER STATISTICS		
Moves		memory
36 Cycles		35 Files
117 Characters		26900 b. Used
AXIS X 6 m		493134 b. Free
AXIS Y 6 m		5.2% Used
Impacts		
D1: 1012	D4: 1719	D7: 0
D2: 0	D5: 34	D8: 0
D3: 376	D6: 0	D9: 411

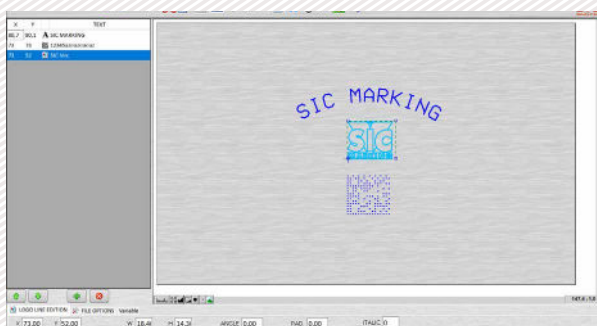
PC software for directly controlling the marking machine.

Available functions:

- Editing of marking files
- Input / output management
- History function and anti duplicates
- Datamatrix ECC200 and UID
- ...

OPTIONAL WINSIC SOFTWARE

WINSIC is a PC software for direct control of the marking machine.



+ Built-in logo design utility

+ Database Management (Excel, Access, txt)



+ Insertion of background images

