

# DOT PEEN MARKING MACHINE

## e10 i53



### + ULTRA COMPACT

- Easy integration: 4 mounting areas
- Marking window: 50 x 20 mm



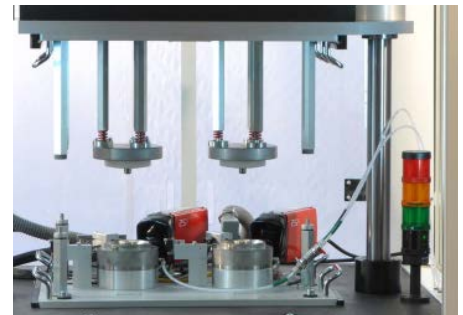
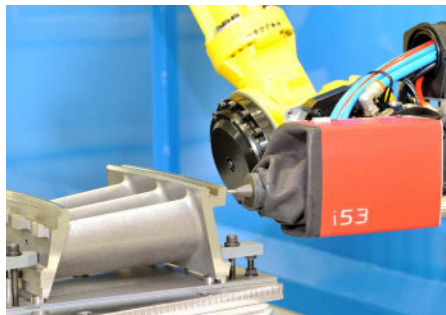
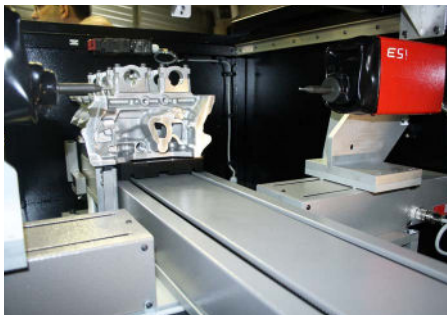
### + POWERFUL

- Precise and accurate guides
- Marking speed and quality
- Marking on all types of materials and difficult surface conditions
- Marking of standard 2D codes (Data Matrix)
- Tolerance to stylus / part distance variation
- 100% electromagnetic

### + ROBUST AND RELIABLE

- Leather protective bellows
- Reduced maintenance
- Design for intensive use in industrial environments

## APPLICATIONS

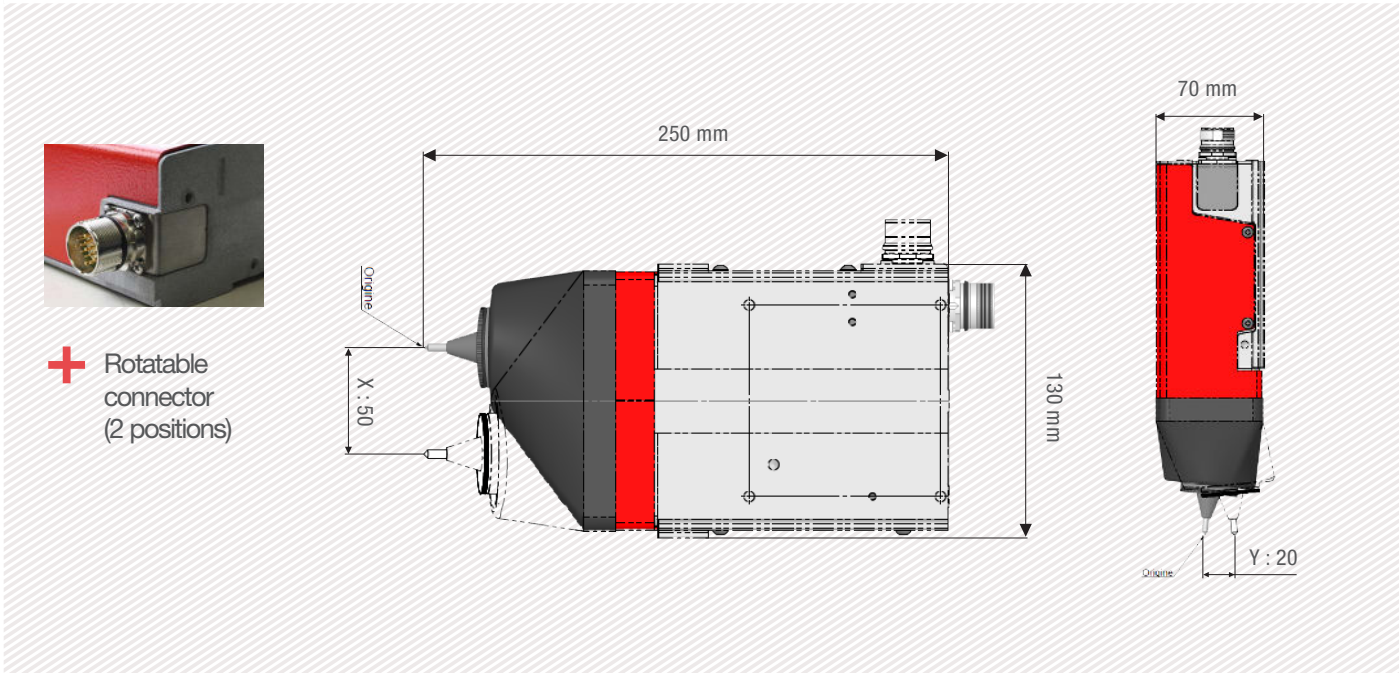


## DOT PEEN MARKING EXAMPLES



# TECHNICAL & MECHANICAL FEATURES

e10 i53	
Marking window	50 x 20 mm - 2 x 0.8 in
External dimensions	250 x 130 x 70 mm - 9.8 x 5.1 x 2.7 in
Weight	2,6 kg - 4.4 lbs
Stylus	Tungsten carbide 60 mm - 2.4 in (80 mm - 3.1 in optional)
Machine / controller cable length	5 m - 16.4 ft (10 or 15 m - 32.8 or 49.2 ft optional)
Protective Bellows	Leather



# OPTIONS



Z axis 50 to 250 mm



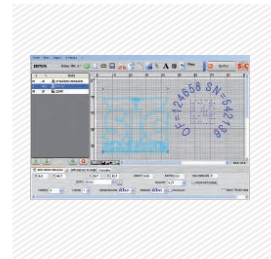
DIN rail kit for e10R controller



Wide range of stylus



Start & Stop Button Box



PC software



Datamatrix reader



Wireless barcode reader



Maintenance kit

Please consult us if a specific configuration is not published in the table attached.

SIC Marking designs customized and turnkey solutions for all industrial sectors. Our design offices produce machines in compliance with your specifications and your industrial standards.

# E10 CONTROL UNIT

## The e10 controller

- Color screen
- USB Port: to easily upload / download your marking files
- Fully programmable
- Standalone (no PC needed)
- Membrane protected industrial Keyboard
- IP40 waterproof box (no opening or fan)



+ Color screen

+ USB Port

+ Multiple connectivities



+ PC software and utilities



## Technical & electronic features

e10 Controller	
Dimensions	322 x 380 x 112 mm - 13.7 x 15 x 4.4 in
Weight	5 kg - 11lbs
LCD screen resolution	480 x 272 pixels
Keyboard	Qwerty integrated, protected by membrane
Power	300 Watt
Power supply	Single phase, 85 to 260 VAC, 50 to 60 Hz
Controlled axes	2 (optional 3rd / 4th axis card)
Operating temperature	From 5 to 40°C

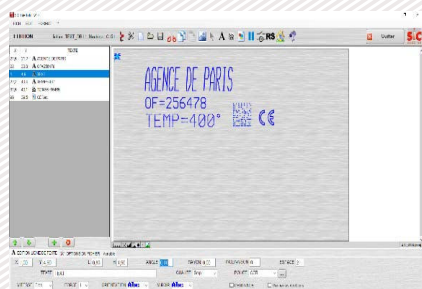
Communication	
Communication ports	RS232, RS422, USB, RS485 Profibus, TCP/IP, Ethernet/IP
Inputs-outputs	8/8
External keyboard input	USB
PC software	Creation of marking files, transfer controller / PC or USB key

Optional communication cards:



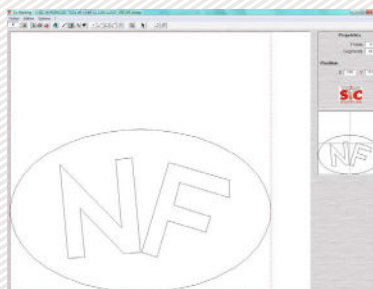
## PC UTILITIES

### File editor



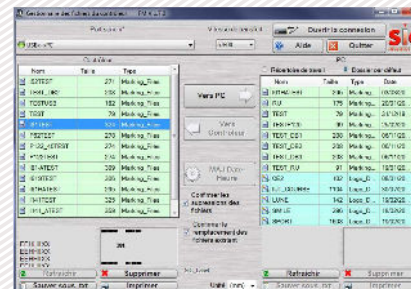
+ Creation or modification of files on PC.

### Creation of logos



+ Creation of vector and matrix logos.

### Creation of logos




+ Backup and file transfer utility.


# E10 RANGE SOFTWARE

## Software features

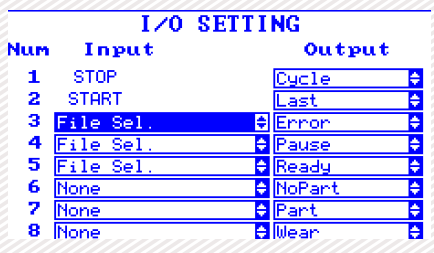
Text function	Incrementation, date codes
Logos	Download from a PC or USB key
Datamatrix	Up to 348 characters, 48 x 48 dots
Fonts	Arial, Comic, Comic_B, Courier, OCR, OCR_BOLD, OCRA, 4x6
Style	Angular, Radial, Inverse, and Mirror
Character Size	From 0,1 mm to 99 mm (limited following marking window)
Depth	Up to 0,3 mm (according to the material)
Resolution Between Dots	0,05 mm MAX
Password	2 security levels
History function	Exportable Excel file
Help with maintenance	Auto diagnosis
Available languages	17



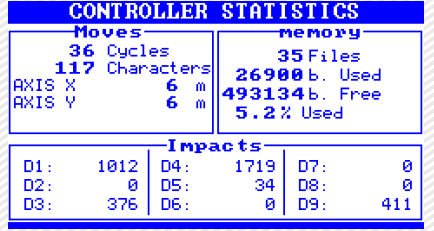
**Graphic view**



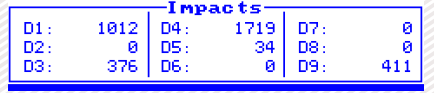
**Edit menu**



Num	Input	Output
1	STOP	Cycle
2	START	Last
3	File Sel.	Error
4	File Sel.	Pause
5	File Sel.	Ready
6	None	NoPart
7	None	Part
8	None	Wear



Moves		memory	
36 Cycles		35 Files	
117 Characters		26900 b. Used	
AXIS X 6 m		493134 b. Free	
AXIS Y 6 m		5.2% Used	



Impacts		
D1: 1012	D4: 1719	D7: 0
D2: 0	D5: 34	D8: 0
D3: 376	D6: 0	D9: 411

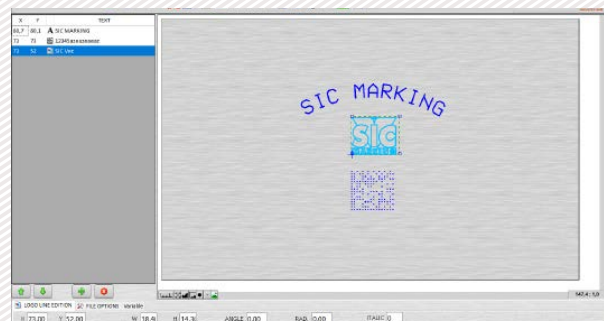
PC software for directly controlling the marking machine.

Available functions:

- Editing of marking files
- Input / output management
- History function and anti duplicates
- Datamatrix ECC200 and UID
- ...

## OPTIONAL WINSIC SOFTWARE

WINSIC is a PC software for direct control of the marking machine.



+ Built-in logo design utility

+ Database Management (Excel, Access, txt)

+ Insertion of background images

