

# DOT PEEN MARKING MACHINE

## e10 i143



### LARGE FORMAT MARKING

150 x 100 mm - 5.9 x 3.9 in



### FAST MARKING ON ALL TYPES OF SURFACES

- High-performance mechanics
- Powerful controller



### ROBUST AND RELIABLE

- Stainless steel bellows
- Design for intensive use in industrial environments



### LOW ACQUISITION COST

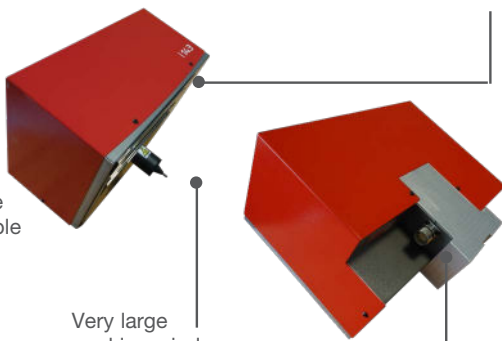
- Few consumable

## E10 I143 CHARACTERISTICS

Stainless steel bellows



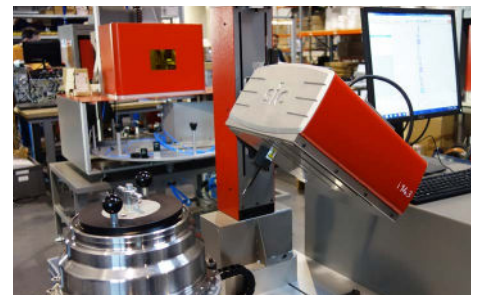
Removable robotic cable



Very large marking window

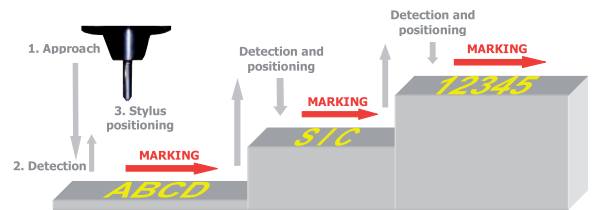
Positioning the recessed connector for added security

## APPLICATIONS



## E10 I143 A CONFIGURATION

(i143 + autosensing option)



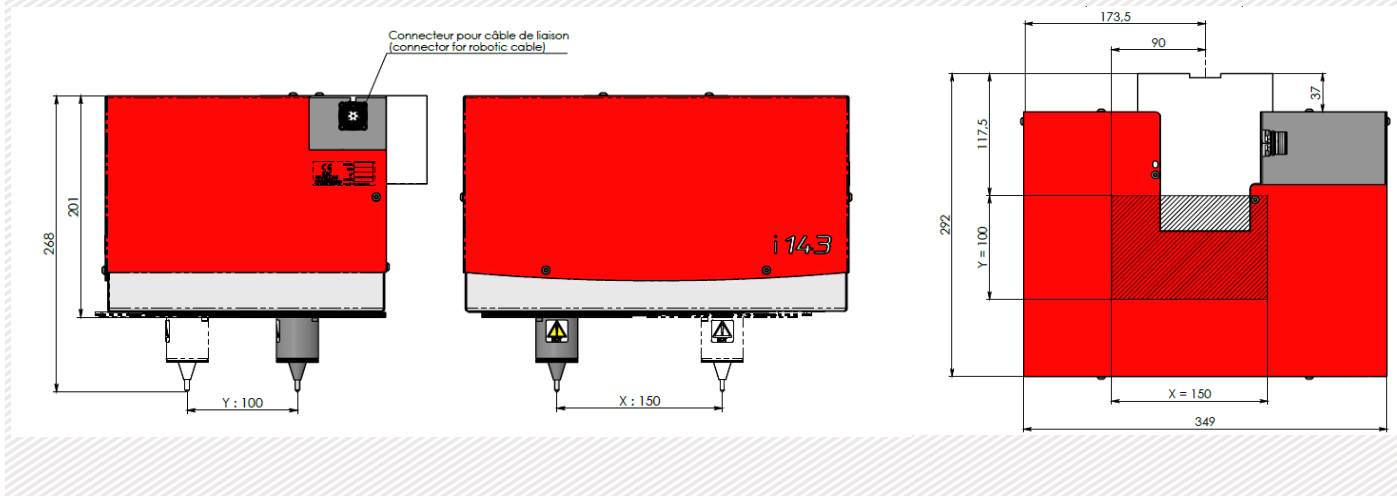
- Repeatability
- Automatic surface detection
- Autosensing system for high quality and reliable marking over time
- Associated with a z axis

## DOT PEEN MARKING EXAMPLES



# TECHNICAL & MECHANICAL FEATURES

e10 i143	
Marking window	150 x 100 mm - 5.9 x 3.9 in
External dimensions	349 x 292 x 268 mm - 13.7 x 11.5 x 10.5
Weight	12 kg - 26.4 lbs
Stylus	Tungsten carbide 60 mm - 2.4 in (80 mm - 3.1 in optional)
Cable de Machine / controller cable length	5 m - 16.4 ft (10 or 15 m - 32.8 or 49.2 ft optional)



# OPTIONS



Axe Z Ig 50 à 250 mm



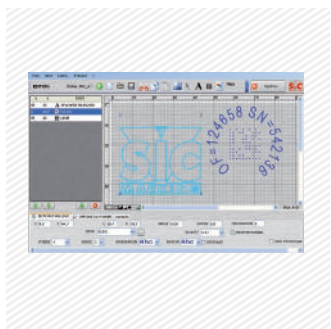
DIN rail kit for e10R controller



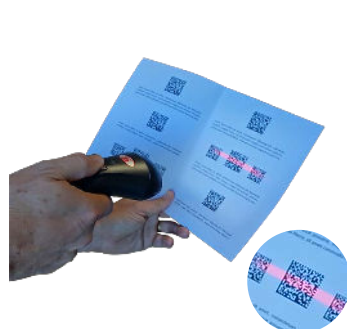
Wide range of stylus



Maintenance kit



PC software



Datamatrix reader 2D & 1D



Wireless barcode reader

Please consult us if a specific configuration is not published in the table attached. SIC Marking designs customized and turnkey solutions for all industrial sectors. Our design offices produce machines in compliance with your specifications and your industrial standards.

# E10 CONTROL UNIT

## The e10 controller

- Color screen
- USB Port: to easily upload / download your marking files
- Fully programmable
- Standalone (no PC needed)
- Membrane protected industrial Keyboard
- IP40 waterproof box (no opening or fan)






+ Color screen + USB Port

+ Multiple connectivities

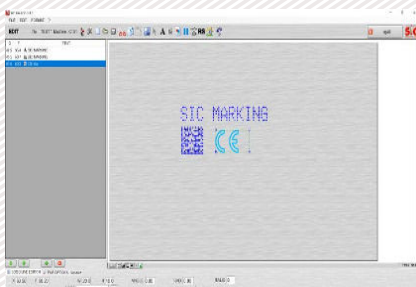
+ PC software and utilities

## Technical & electronic features

e10 Controller		Communication	
Dimensions	322 x 380 x 112 mm - 13.7 x 15 x 4.4 in	Communication ports	RS232, RS422, USB, RS485 Profibus, TCP/IP, Ethernet/IP
Weight	5 kg - 11lbs	Inputs-outputs	8/8
LCD screen resolution	480 x 272 pixels	External keyboard input	USB
Keyboard	Qwerty integrated, protected by membrane	PC software	Creation of marking files, transfer controller / PC or USB key
Power	300 Watt	Optional communication cards:	
Power supply	Single phase, 85 to 260 VAC, 50 to 60 Hz	Ethernet TCP	
Controlled axes	2 (optional 3rd / 4th axis card)		 
Operating temperature	From 5 to 40°C		

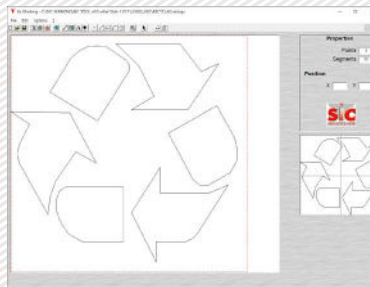
## PC UTILITIES

### File editor



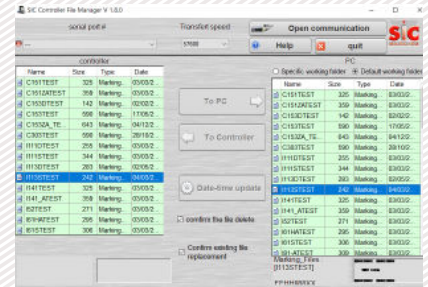
+ Creation or modification of files on PC.

### Creation of logos



+ Creation of vector and matrix logos.

### File manager




+ Backup and file transfer utility.


# E10 RANGE SOFTWARE

## Software features

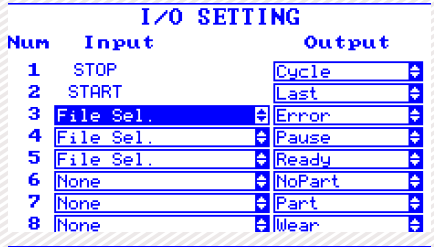
Text function	Incrementation, date codes
Logos	Download from a PC or USB key
Datamatrix	Up to 348 characters, 48 x 48 dots
Fonts	Arial, Comic, Comic_B, Courier, OCR, OCR_BOLD, OCRA, 4x6
Style	Angular, Radial, Inverse, and Mirror
Character Size	From 0,1 mm to 99 mm (limited following marking window)
Depth	Up to 0,3 mm (according to the material)
Resolution Between Dots	0,05 mm MAX
Password	2 security levels
History function	Exportable Excel file
Help with maintenance	Auto diagnosis
Available languages	17



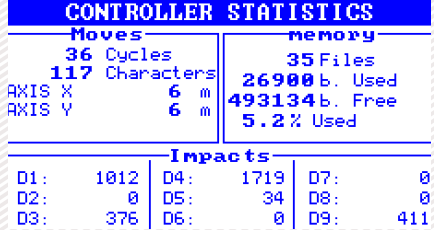
**Graphic view**



**Edit menu**



Num	Input	Output
1	STOP	Cycle
2	START	Last
3	File Sel.	Error
4	File Sel.	Pause
5	File Sel.	Ready
6	None	NoPart
7	None	Part
8	None	Wear



**CONTROLLER STATISTICS**

Moves: 36 Cycles, 117 Characters  
 memory: 26900 b. Used, 493134 b. Free, 5.2% Used

AXIS X: 6 m, AXIS Y: 6 m

**Impacts**

D1:	1012	D4:	1719	D7:	0
D2:	0	D5:	34	D8:	0
D3:	376	D6:	0	D9:	411

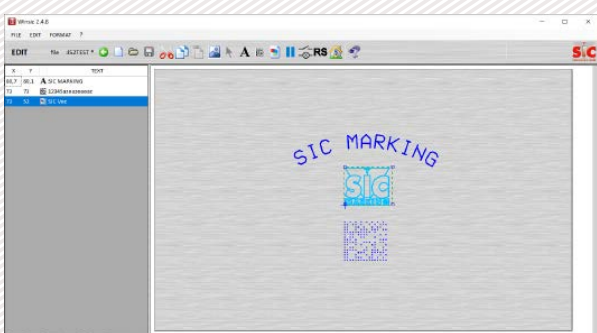
PC software for directly controlling the marking machine.

Available functions:

- Editing of marking files
- Input / output management
- History function and anti duplicates
- Datamatrix ECC200 and UID
- ...

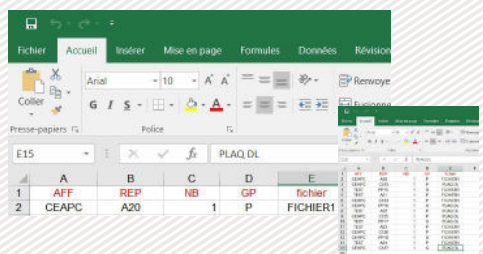
## OPTIONAL WINSIC SOFTWARE

WINSIC is a PC software for direct control of the marking machine.



**+ Built-in logo design utility**

**+ Database Management (Excel, Access, txt)**



**+ Insertion of background images**

